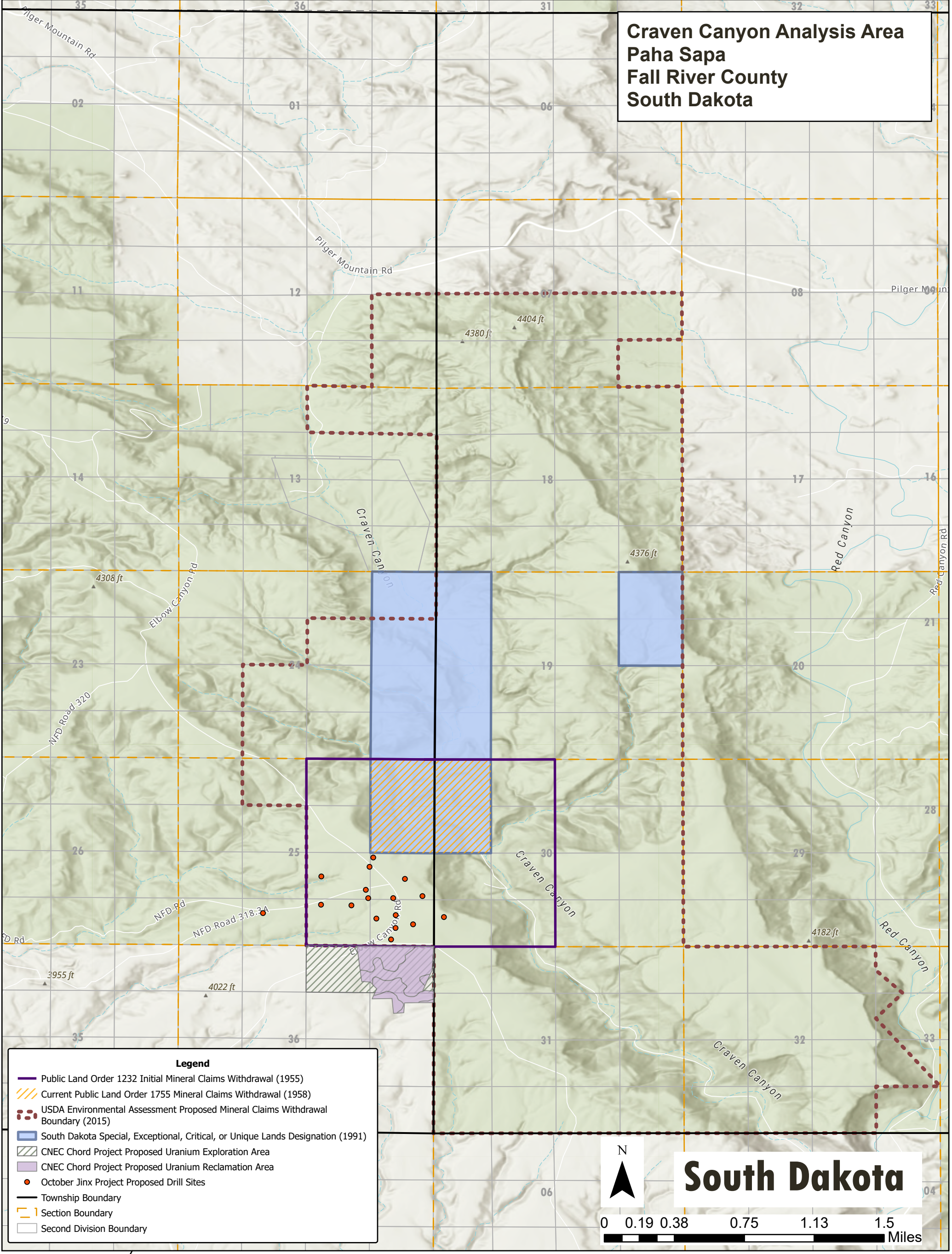


**Craven Canyon Analysis Area  
Paha Sapa  
Fall River County  
South Dakota**



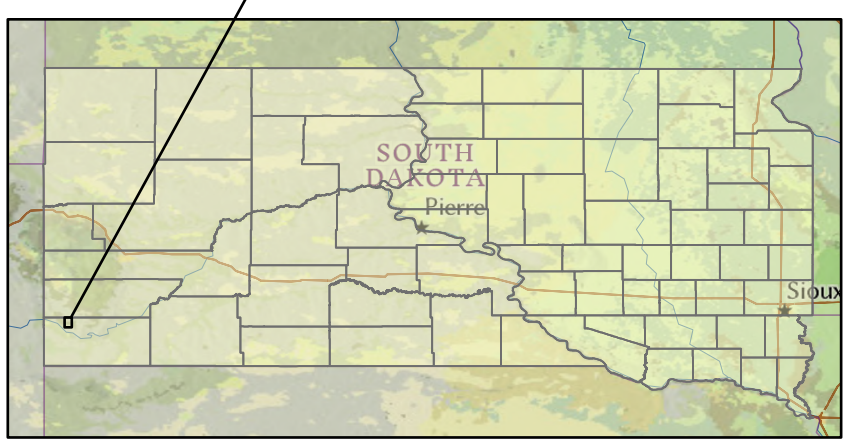
**Legend**

- Public Land Order 1232 Initial Mineral Claims Withdrawal (1955)
- Current Public Land Order 1755 Mineral Claims Withdrawal (1958)
- USDA Environmental Assessment Proposed Mineral Claims Withdrawal Boundary (2015)
- South Dakota Special, Exceptional, Critical, or Unique Lands Designation (1991)
- CNEC Chord Project Proposed Uranium Exploration Area
- CNEC Chord Project Proposed Uranium Reclamation Area
- October Jinx Project Proposed Drill Sites
- Township Boundary
- Section Boundary
- Second Division Boundary


N

**South Dakota**

0 0.19 0.38 0.75 1.13 1.5 Miles



Strategic Mapping Provided by:

 **Mato Ohitika Analytics LLC**  
©2026 All Rights Reserved.

South Dakota Study Area  
Craven Canyon Area  
Paha Sapa  
South Dakota  
May 14, 2026

 **Black Hills Clean Water Alliance**

 **DAKOTA RURAL ACTION**  
GRASSROOTS ORGANIZING FOR THE FUTURE

MAPBOOK  
Craven Canyon Mining Analysis  
Chord Project & October Jinx Project  
Clean Nuclear Energy Corp. Uranium Exploration  
USDA Environmental Assessment  
Q2 2026